

SUBJECT: ACCEPTANCE OF PROJECT – SPORTS COMPLEX SOFTBALL AND SPORTS FIELD LIGHTING PROJECT

SOURCE: Public Works Department - Engineering Division

COMMENT: G&S Electric has completed the Sports Complex Softball and Sports Field Lighting Project per plans and specifications. The project included the lighting of the two softball fields necessary to expand the use of these facilities at the Sports Complex.

Staff carefully tracks construction costs of all Capital Improvements Projects and reports project construction expenditures when the project is accepted by the City Council. On August 20, 2013, City Council authorized expenditure of \$365,406.42 for construction, construction management and quality control services for the Sports Complex Softball and Sports Field Lighting Project. The following itemizes the construction-related costs in two categories: 1) the construction contract, and 2) a combination of construction management and quality control.

- 1) Final construction cost is \$325,497.13.
- 2) Construction management and quality control costs are \$7,346.40.

Total project construction costs equate to \$332,843.53, which is less than the \$365,406.42 overall budget approved by Council at the time of award. The funding source for the Sports Complex Softball and Sports Field Lighting Project is from the CEQA mitigation measures for the Porterville Courthouse as approved in the 2013/2014 Annual Budget. The remaining balance in this account is \$75,000.

G&S Electric requests that the City accept the project as complete. Staff reviewed the work and found it acceptable.

RECOMMENDATION: That City Council:

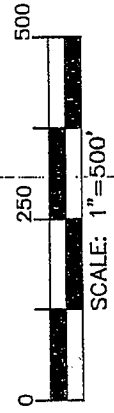
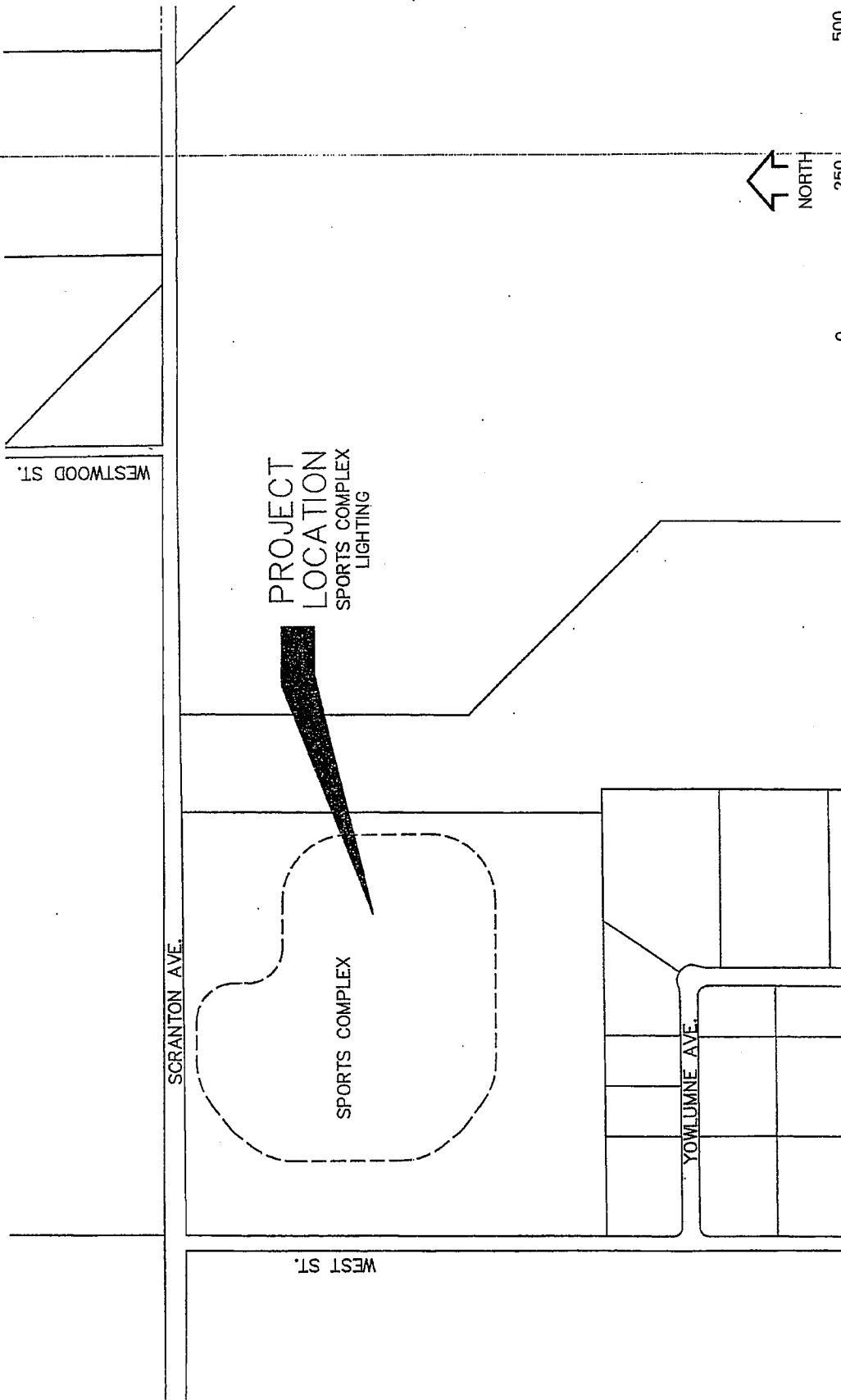
1. Accept the project as complete;
2. Authorize the filing of the Notice of Completion; and
3. Authorize the release of the 5% retention thirty-five (35) days after recordation, provided no stop notices have been filed.

ATTACHMENTS: Locator Maps

P:\pubworks\General\Council\Acceptance of Project - Sports Complex Softball Field & Perimeter Lighting Project 2014-01-21.doc

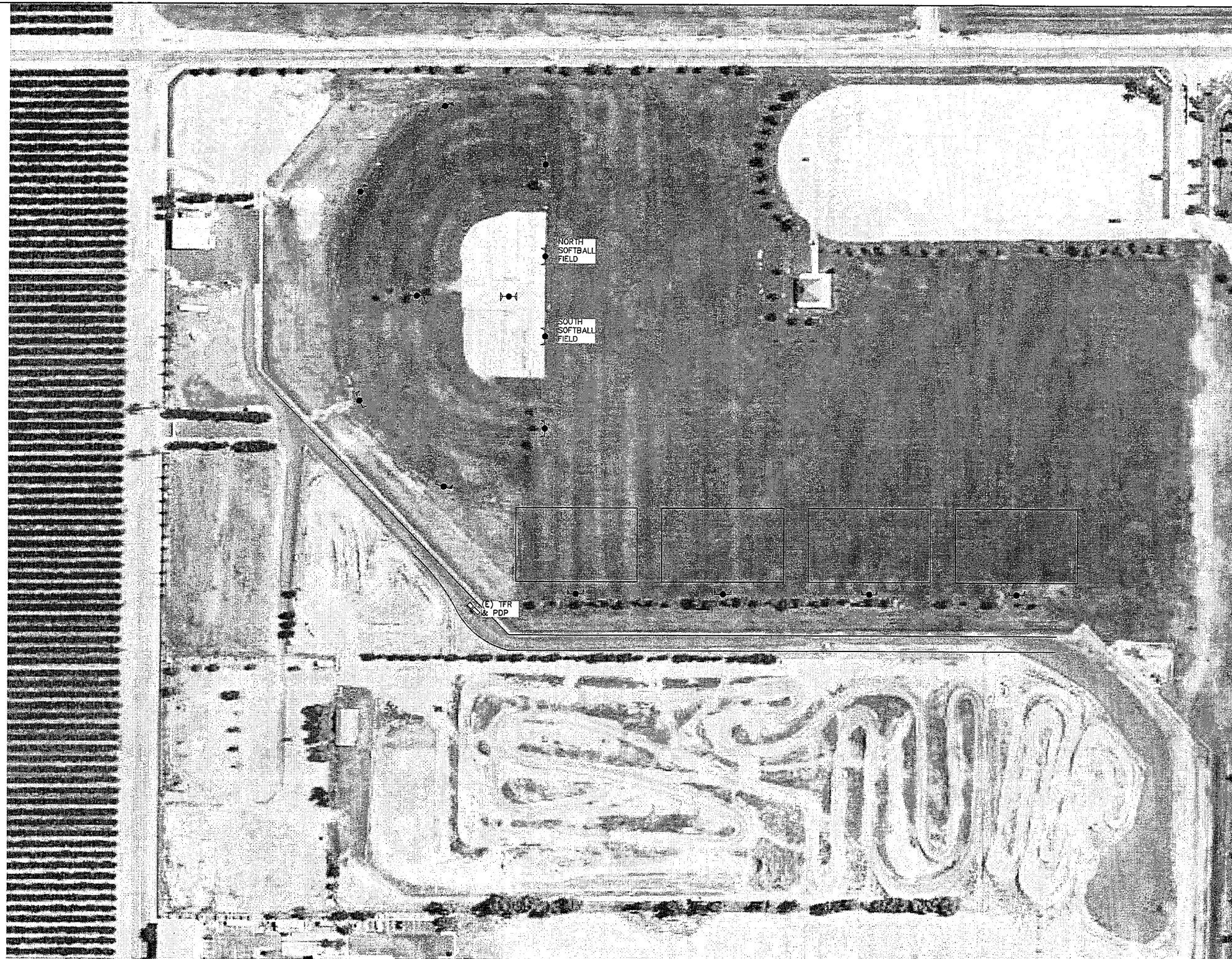
Dir BSA Appropriated/Funded MB CM J

Item No. 8



City of Porterville
291 N. MAIN ST.
PORTERVILLE, CA. 93257
559 7827462

**SPORTS COMPLEX
LIGHTING**



SPORTS FIELDS LIGHTING
NO SCALE



Know what's below.
Call before you dig.

EPS IS RESPONSIBLE FOR ELECTRICAL SYSTEMS DESIGN ONLY.
EPS IS NOT RESPONSIBLE FOR ELECTRICAL SAFETY WORK
PROCEDURES AND/OR USE OF REQUIRED PERSONAL
PROTECTIVE EQUIPMENT, SEE NFPA 70E "STANDARD FOR
ELECTRICAL SAFETY IN THE WORKPLACE" AND OSHA 29 CFR.

CONTRACTOR MUST READ SPECIFICATIONS AND
INSTALL MATERIAL AS PER SPECIFICATIONS
AND/OR PLANS OR AS PER E.P.S. APPROVAL

SPORTS FIELDS LIGHTING

CITY OF PORTERVILLE
2701 W SCRANTON
PORTERVILLE, CA

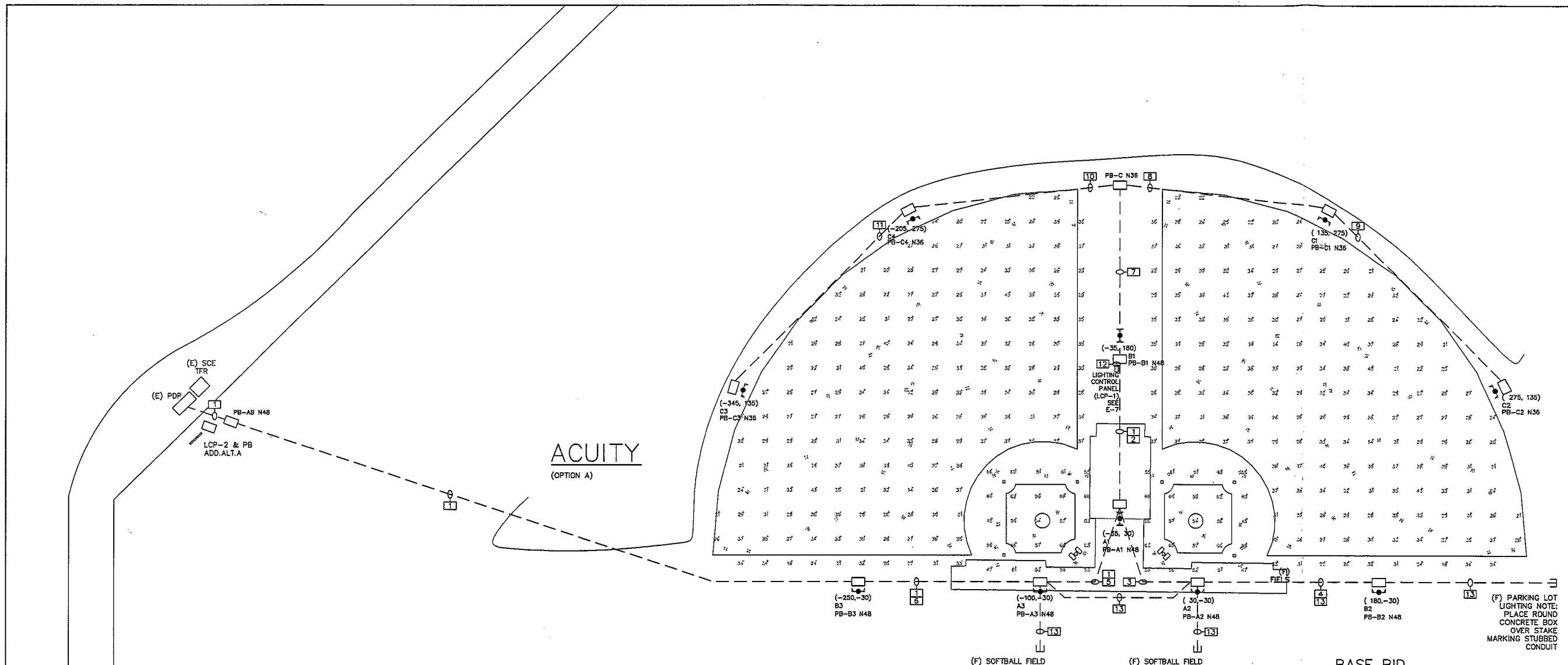
GARY R. OLSEN, P.E. CA EE 8283
JOE PREVENDAR, P.E. CA EE 16581
4048 NORTH FRESNO STREET
FRESNO CALIFORNIA 93726
(559) 221-7230 FAX: (559) 221-0507
gary@epsfresno.com
joe@epsfresno.com

ELECTRICAL POWER SYSTEMS
E.P.S.
INC. P.O. BOX 100
FRESNO, CA 93726
Professional and Consulting
Electrical Engineering
Since 1978

REVISIONS	
NO.	DATE

DATE: APRIL 2013
JOB NO.: PC-13-001
DESIGNED BY: JPP
DRAWN BY: CRT
SCALE: NONE
DWG. NO.: PC001_EL_CS

SHEET:
1



CONSTRUCTION MATERIAL NOTES:

ALL PULLS TO BE CONTINUOUS, NO SPICES ALLOWS

ABOVE GRADE - HOT DIPPED GALVANIZED RIGID STEEL CONDUIT TO BE USED FOR ALL EXTERIOR AND INTERIOR LOCATIONS ABOVE GRADE OR ELSEWHERE SHOWN ON PLANS. ALL RIGID CONDUIT AND FITTINGS TO BE THREADED. USE OF SET SCREW OR COMPRESSION TYPE CONNECTOR IS PROHIBITED. MEYERS HUBS TO BE USED ON ALL EXTERIOR PANEL CONNECTIONS.

BELOW GRADE - RIGID PVC NONMETALLIC CONDUIT SCHEDULE 40 TO BE USED FOR ALL UNDERGROUND LOCATIONS AND BELOW VAPOR BARRIER OF SLAB. NO CONDUITS SHALL BE INSTALLED TO REDUCE THE STRUCTURAL INTEGRITY OF FOOTINGS.

CHEMICAL BUILDINGS AND CORROSIVE ATMOSPHERES - RIGID PVC NONMETALLIC CONDUIT SCHEDULE 80 TO BE USED FOR ALL INTERIOR LOCATIONS ABOVE GRADE IN CHEMICAL BUILDINGS AND CORROSIVE ENVIRONMENTS.

THROUGH CONCRETE SLABS AND EXTERIOR CORROSIVE ATMOSPHERES - PVC COATED GALVANIZED RIGID STEEL CONDUIT MINIMUM 40 MIL FACTORY COATING TO BE USED FOR ALL EXPOSED CONDUITS THROUGH CONCRETE SLABS (MINIMUM 12" ABOVE AND BELOW SLAB) AND ALL EXTERIOR LOCATION CORROSIVE ATMOSPHERES. USE MANUFACTURERS' SPECIFIED TOOLS AND PROCEDURES FOR INSTALLATION.

MOTOR OR SENSOR CONNECTIONS - LIQUID TIGHT FLEXIBLE METAL CONDUIT (UV RESISTANT) TO ONLY BE USED ON CONNECTIONS TO MOTORS OR SENSORS. MAXIMUM LENGTH TO BE 30'.

JUNCTION BOXES - MINIMUM SIZE PER NEC. EXPOSED LOCATION, 1 AND 2 GANG TO BE CAST IRON DEVICE BOXES TYPE FS/PD SUITABLE FOR WET LOCATIONS. EXPOSED LOCATION EXTERIOR LARGER SIZES CONTINUOUS HINGE TYPE 4. CORROSIVE LOCATIONS CONTINUOUS HINGE TYPE 4X STAINLESS STEEL.

GROUND CONNECTIONS - GROUND CONNECTIONS TO BE EXOTHERMIC CADWELD (ALL 600 AMP OR LARGER SERVICE) OR BURNDY HYDRAULIC COMPRESSION CONNECTORS. GROUND BUS CONNECTIONS TO BE CRIMP LUG TYPE WITH BOLTED CONNECTION TO GROUND BUS.

CONTACT EPS TO SCHEDULE AN ELECTRICAL PRECONSTRUCTION MEETING PRIOR TO COMMENCING CONSTRUCTION

LUMINAIRE NOTES:

- 1) READINGS SHOWN ARE MAINTAINED HORIZONTAL ILLUMINANCE.
- 2) BASED ON A LIGHT LOSS FACTOR OF .80.
- 3) RESULTS ARE SHOWN IN UNITS OF FOOTCANDLES.
- 4) READINGS SHOWN ARE TAKEN 3 FEET ABOVE GRADE.
- 5) INCLUDES EFFECTS OF LAMP OPERATING POSITION.

Luminaire Statistics					
	Avg	Max	Min	Max/Min	Avg/Min
INFIELD 1	58	67.9	47	1.4	1.2
OUTFIELD 1	31	43.1	19	2.3	1.8
INFIELD 2	58	67.9	47	1.4	1.2
OUTFIELD 2	31	43.1	19	2.3	1.8

Luminaire Schedule				
Sym	QTY	Catalog No.	Lamp	Initial Lumens
N	32	TSP 1500M GP24M	MH-1500/BL/HOR	150000
M	32	TSP 1500M GP24M	MH-1500/BL/HOR	150000
W	28	TSP 1500M GP24M	MH-1500/BL/HOR	150000

Luminaire Schedule				
Pole	QTY	EPAET SQ	Power(KVA)	Height
A1	12	39.6	18	80
A2	5	18.8	9	60
A3	5	18.8	9	60
E1	16	59.4	27	70
E2	9	29.7	13.5	70
E3	9	29.7	13.5	70
C1	9	26.4	12	70
C2	8	26.4	12	70
C3	8	26.4	12	70
C4	5	26.4	12	70

SHEET NOTES:

- 1) ALL PULL BOXES SHALL BE INSTALLED W/ 12" EXTENSION

CONDUIT/CONDUCTOR SCHEDULE

- 1 3" C W/ 4-350MCM CU THWN & #2CU GND
3" C W/ #12CU PULLCORD
- 2 2" C W/
A1 4-#6CU & #5CU GND
A2 2-#6CU & #5CU GND
A3 2-#6CU & #5CU GND
B2 2-#6CU & #5CU GND
B3 2-#6CU & #5CU GND
- 3 1-1/4" C W/
A2 2-#6CU & #5CU GND
B2 2-#6CU & #5CU GND
- 4 1" C W/
B2 2-#6CU & #5CU GND
3" C W/ #12CU PULLCORD
- 5 1-1/4" C W/
A3 2-#6CU & #5CU GND
B3 2-#6CU & #5CU GND
- 6 1" C W/
B3 2-#6CU & #5CU GND
- 7 2" C W/
C1 2-#6CU & #5CU GND
C2 2-#6CU & #5CU GND
C3 2-#6CU & #5CU GND
C4 2-#6CU & #5CU GND
- 8 1-1/4" C W/
C1 2-#6CU & #5CU GND
C2 2-#6CU & #5CU GND
- 9 1" C W/
C2 2-#6CU & #5CU GND
- 10 1-1/4" C W/
C1 2-#6CU & #5CU GND
C4 2-#6CU & #5CU GND
- 11 1" C W/
C2 2-#6CU & #5CU GND
- 12 2" C W/
B1 4-#6CU & #5CU GND
- 13 3" C W/ #12CU PULLCORD

**BASE BID
SOFTBALL FIELD LIGHTING**



1"=0' = 40'

**DRAWING NOT TO
SCALE IF PRINTED
REDUCED SIZE**

SOFTBALL FIELD LIGHTING

CITY OF PORTERVILLE
2701 W SCRANTON
PORTERVILLE, CA

GARY R. OLSEN, P.E. CA. EE 8283
JOE PREVENDAR, P.E. CA. EE 16581
4049 NORTH FRESNO STREET
FRESNO CALIFORNIA 93726
(559) 221-7230 FAX: (559) 221-0507
gary@epsfresno.com
joe@epsfresno.com

NO.	DATE	REVISIONS
		REVISION

DATE: APRIL 2013
JOB NO.: FC-13-001
DESIGNED BY: JPP
DRAWN BY: CRT
SCALE: NONE
DWG. NO.: P0001_E2_LP_ACUITY



EPS IS RESPONSIBLE FOR ELECTRICAL SYSTEMS DESIGN ONLY. EPS IS NOT RESPONSIBLE FOR ELECTRICAL SAFETY WORK PROCEDURES AND/OR USE OF REQUIRED PERSONAL PROTECTIVE EQUIPMENT, SEE NFPA 70E "STANDARD FOR ELECTRICAL SAFETY IN THE WORKPLACE" AND OSHA 29 CFR.

**CONTRACTOR MUST READ SPECIFICATIONS AND
INSTALL MATERIAL AS PER SPECIFICATIONS
AND/OR PLANS OR AS PER EPS APPROVAL**